

OUT WITH THE OLD.....



.....AND IN WITH THE NEW

007

Stardate 52010.1 Captain Richard Henline reporting.

With recent upgrades and refits to the USS Kelly, we have spent a fair amount of time in dry dock. While such things are necessary to the smooth operations of our vessel, it does lead to a certain complacency among the crew. We need to be out on the final frontier facing the unknown, seeking out strange new worlds and civilizations...boldly going where no man has gone before. A New Year lies before us. What will we see? What will we do to improve our community and ourselves? What changes will occur in our lives? Our theme for this year is a theme of action. "Just Do It!" We will be an action-oriented club during the coming year, boldly going where no one has gone before. There are many things in store for the Kelly in the next few months. We will be doing an Explorer mission, doing some Laser Tag as well as other exciting activities. Several of us had the opportunity to be interviewed by the news at the recent promotion for Star Trek: Insurrection. Hopefully, more of that will be coming our way. People are excited about a club that is doing things. They will want to come along and do the same with us. Let's make this the best year for the USS Kelly yet! We can make our dream fly just as Gene Roddenberry made Star Trek fly. So let's look to the stars...and "Just Do It!"

richard@henline.com

ASK NUMBER ONE

By Lt. Commander Jill Bogler, Executive Officer

This issue's question comes from Crewman Y. L. O'Jacket of Security who says, "I'm fresh out of the Academy, and I am still having problems calculating the Stardate. Please help!"

Well, I understand your problem, Crewman. Stardates can get somewhat confusing if you are not familiar with using them. Because we wanted a system that is in keeping with the feel of Star Trek, as well as being easy to understand, this is how we work it in the Seventh Fleet.

The first two numbers of the stardate indicate the year. In the first season of Star Trek: The Next Generation, stardates always began with the number 41, during the second season they began with 42, season three 43, and so on. This method has continued throughout DS9 & Voyager. This season, all stardates begin with 52. The most confusing part about the year is that it starts in September. More about that in a moment.

The next two numbers indicate the month: 02 for February, 07 for July, 10 for October, and so forth. Now here comes the tricky bit. Since the new seasons of Star Trek begin in September, we begin our new star year then as well. That means that 5209__ indicated September 1998, and 5201__ designates January of 1999, even though 01 comes numerically before 09.

Finally, the last two numbers indicate the day. If a date is the 1st through the 9th, we need to remember to put a 0 in front of it. Also, the period is placed between the final two digits. For example, the stardate for January 1, 1999, is 52010.1.

The most important things to remember about the stardates are to begin the new star year in September and to place the decimal between the last two digits.

If you have any more questions on this or any other subject, don't forget to... **ASK NUMBER ONE.**

Note: You are always welcome to contact me at: Agiani_no1@yahoo.com

Nicole DeBoer as Esri Dax

Nicole says that she has been acting since she was 17, and has been working most of that time. Most of her work has been in TV and theatre, but she has done a couple of movies. She has never had an acting class; she has learned by working.

Some of her notable appearances have been in *Cube*, a sci-fi thriller & winner of the Toronto Film Festival; and the ShowTime productions *Poltergeist* and *The Outer Limits*. Other movie credits include *A Family of Cops* (CBS), and *My Date With The President's Daughter* (Disney Channel).

The new Dax is not afraid of being typecast, because she's had plenty of non sci-fi roles, including comedy. *Dooley's Gardens* (CBS) is a recent favorite, and a couple of years ago she appeared in New Line Cinema's *Nation Lampoons Senior Trip*. Nicole isn't new to series television either. She was a regular role in *Catwalk* and a recurring part in *Kids In The Hall* (HBO, CBC).

Nicole has been fully briefed on the character of Esri. She was given a detailed breakdown of Dax's relationship with the other characters. She thinks it is all very "complex & interesting" not "schizophrenic". Nicole knows that Esri's friendship with Sisko is one of her most important relationships. It seemed perfectly natural for the newly joined Trill to turn to her old friend for help.

Still it can be difficult to react appropriately to all of the different people who knew Jadzia; especially Worf, the bereaved husband. For example, Worf will not be running to Esri with open arms. Even though she has all of Jadzia's memories, and wants to run to him with open arms and give him a big hug, she can't because she is Esri, not Jadzia. It has to be very moving.

Since Esri doesn't have any training to be joined, she's in a bit of a mess right now, because she hasn't established a personality as Esri Dax. All of her previous personalities keep coming out instead. It is hard for her. She has breakdowns, and cries for no apparent reason. Esri is quite intelligent and capable-it's just that a person gets a bit distracted when there are eight people running around in your head!

Nicole has always been a Star Trek fan, especially the original series. A dream came true for her while auditioning for *Tek War*. She approached a man in a hat & sunglasses whom she thought was the director. When he answered her question she looked up, freaked out and shouted, "Oh my God, you're William Shatner!" She says, "I loved the original, and I loved *The Next Generation*. I'm still a huge fan of the Vulcans. I'm a big fan of Spock. Also Lieutenant Ro. She was really cool."

How is she fitting in on DS9? "They were kind to me in the beginning, but now they make fun of me. We tease each other, so I guess I'm fitting in fine."

BY LT. CMDR. RUTH BURNS

02

CONGRATULATIONS

To the newest crewmember of the
U.S.S. TICONDEROGA

Steven Nicholas Stark

Born: December 18, 1998

Weight: 71b, 6 oz Length: 19 inches



MY FIRST OUT-OF-STATE CONVENTION

In November I went with Jill and George Bogler, and Dawn Harvey to the "Fab Four" Convention in Boise. We left on Friday afternoon & arrived late that night. After checking into our room, we crashed.

After breakfast Saturday, we hit the dealers' room. They had every picture you could ever want, plus some of everything for any Sci-Fi interest--Dr. Who, Battlestar Galactica, Star Trek, Star Wars, etc.

Besides the Fab Four they also had Dirk Benedict, Anne Lockhart & Herbert Jefferson Jr., from "Battlestar Galactica", and extra Trek Guests Gary Lockwood (Gary Mitchell) and Bevery Washburn (Lt. Galloway from The Deadly Years). But the reason that I was there was to hear the Fab Four speak.

First was James Doohan, who is retiring from the convention circuit. He talked about making the different Star Trek Movies, and starring on Star Trek: TNG in "Relics". Next to speak was Nichelle Nichols. She talked about her upcoming ventures and the new line of accessories she is going to produce, and also how her singing career is going. Then came George Takei. He told stories about some of his different adventures in promoting Star Trek. He also talked about the possibility of there being a "Captain Sulu" Star Trek adventure. Last but not least was Walter Koenig. He was asked about his adventures as Bester in the "Babylon 5" series. He was also asked if he enjoyed playing Bester, which he said that he did.

After all the stars were through speaking, they were signing autographs in the lobby. Later the stars put on a show during a "Dinner With the Stars". I did not attend, but Jill & George did so they will have to tell what happened. While they were at dinner, Dawn & I went out and shopped for shoes for her costume, but returned in time for the dance. We stayed for a little while but as there weren't many people, we went back to the room and crashed.

The next day Jill & George went down to the convention while Dawn and I stayed in the room putting the finishing touches on her costume--the "joining gown" of "H'iro", her dead Bajoran character ("She's Alive!" the Admiral would say now). Jill's Psi Cop was cut in the second round. Dawn received third place, instead of second. Bummers.

After the contest they had the Fab Four back out on the floor altogether. They played well off of each other, telling stories about making the movies, and the pranks they have pulled on each other over the years. I wish I had my camcorder there.

I finished getting my autographs after we checked out of the hotel. Then we headed home. We arrived home very late.



DINNER WITH THE "FAB FOUR"

Lt. Thorsen has reported on the details of the convention. We now review "Dinner with the Stars".

When we determined we would be going to Boise we decided to splurge & treat ourselves to the dinner. It was worth the extra money to be there as the stars came to your table & chatted, and to catch special performances by them. All the stars were there, but only the Fab Four performed.

James Doohan (Scotty)

It is easy to see why he is retiring from the convention circuit. However he responded with wit and charm when he was able to hear. Age may have slowed him down physically, but his mind is still sharp. At our table was a cute little girl of perhaps 8. Jimmy made the high point of her life by giving her a kiss. At the dinner with the stars he told stories covering his entire career. He wrapped it up by singing in Welsh. Nichelle entered singing from the rear & joined him on stage. He does not foresee being asked to appear in any Star Trek movie or TV episode. He says, "They don't want old people". Sadly, he is probably right.

Nichelle Nichols (Uhura)

Nichelle is still going strong and still has a beautiful voice. At the dinner she sang several songs, including a brief duet with Jimmy. Her current projects are promoting her line of accessories and writing a sequel to her previous book (not her autobiography). She promotes herself through her website www.uhura.com. There was a great moment during the joint Fab Four appearance on Sunday. They were having trouble with the microphones and feedback. After calling for help to no avail several times, Nichelle got off the platform and started adjusting the sound controls herself. Uhura to the rescue!

George Takei (Sulu)

George is the same guy we saw here in SLC a couple of years ago, right down to complaining about the cold. He still champions his favorite lost cause-a Captain Sulu series. He is the favorite foil for the others' practical jokes, and is especially susceptible to Walter's gags. At the dinner he sang.

Walter Koenig (Chekov)

He read from his autobiography then sang a song that involved the wearing of several dinner napkins. Neither of us got the joke.

Our mission was a success. We talked with all the clubs represented there and set up some newsletter exchanges. We also confirmed that Slanted Fedora will bring a convention to Salt Lake City next fall.

For more details on the Boise convention go to www.geocities.com/area51/corridor/4725/fabfour.html

For the latest details on the SLC convention, keep checking www.geocities.com/area51/corridor/4725/fedora.html



Earth Date: December 11, 1998 Trolley Corners Theatres, Salt Lake City

The U.S.S. Kelly was invited to help promote the latest Star Trek movie. We arrived for the evening shows and set up a display. Almost everyone was in uniform. We had created a trivia sheet based on the first eight Trek movies. The sheets were numbered & randomly selected people won a prize-either an Insurrection poster or the Klingon Honor Guard computer game. Paramount and Trolley Corners generously provided the prizes.

Several Kelly members were interviewed by Fox 13 news. Jill Bogler got the most attention as she was wearing the brand new Dress White uniform, which was making its debut in the movie. Also helping out were: George Bogler; Don, Connie, and Russ Hallett, Richard Henline, Dennis & Rhonda Hollinger, Mellanie Ramos, Mike Read, and Christy Thorsen. Addition promotions involving The 7th Fleet took place in Sandy, Layton, and Ogden.

Insurrection is the ninth Star Trek movie overall and the third to feature the Next Generation crew. It was feared Insurrection would fall to the "odd number curse", however it was well received by audiences and shot to the top of the box office list, squashing A Bug's Life.

By Comparison:

Star Trek: First Contact	1996	\$30.7 million
Star Trek: Generations	1994	\$23.1 million
Star Trek: Insurrection	1998	\$22.4 million
Star Trek VI The Undiscovered Country	1991	\$18.2 million

It looks like Insurrection is a winner for Paramount, the theatres, and the fans. The Kelly expresses appreciation to the management and staff of Trolley Corners for letting us come and being such gracious hosts.





Moreau-2 by Joni Wagner

Barbara Luna was born in Manhattan and virtually grew up on Broadway. Barbara's Italian, Hungarian-Jewish, Spanish, Portuguese, Filipino background led her to appear in her first Broadway show at the age of six in Rodgers & Hammerstein's "South Pacific", where she performed the role of Ngana in French. She went on to do "The King And I" and then "Tea House of the August Moon" as the understudy to Lotus Blossom, in which she spoke her entire role in Japanese.

Luna, as she prefers to be called, was then given the starring role in the first national touring company of "Tea House" which brought her to Hollywood. She was discovered by Mervyn Leroy to portray the blind girl in "Devil at 4 O'clock", opposite Frank Sinatra and Spencer Tracy. That led to other films such as "Firecreek" with James Stewart and Henry Fonda; "Ship of Fools" with Oscar Werner, Simone Signoret, Vivian Leigh and Lee Marvin; and "The Concrete Jungle" playing Cat, the queen bee of the prison, just to name a few.

Her exotic and timeless look has afforded her the opportunity to portray a wide variety of roles, not just with theater and film, but in a lengthy television career as well. During the sixties, she portrayed Marlena in the all-time classic Star Trek episode, "Mirror, Mirror". Some of her more recent credits include guest-starring roles on "Dallas", "The Bill Cosby Show", "Hunter", "Mission Impossible", and "The Young Riders."

Her stage credits include the role of Anita in a revival of "West Side Story" at Lincoln Center in New York followed by her Broadway role as Morales in "A Chorus Line" where she brought the house down singing "What I Did For Love". After which, this multi-talented lady opened her nightclub act, written and directed by Oscar nominee Marc Shamen. As her second club engagement started to take New York City by storm, Lee Solomon of the William Morris Agency booked her to open for Bill Cosby at the Concord Hotel in the Catskills. From there, Luna was whisked into the world of TV soap opera, creating the role of Anna in "Search For Tomorrow". This then led to a long-term contract to star on "One Life To Live" where she became widely known for playing Maria Roberts, "the bitch everyone loves to hate".

Continuing to utilize her talents, Luna had the opportunity to visit some of the world's most exotic locations as the co-host of a television special, "The Alpen Tour" sponsored by TWA for the Travel Channel. Her recent Hollywood nightclub appearances at the Gardenia Club and the Cinegrill at the Roosevelt Hotel were sellouts. Ms. Luna is an avid sports fan, enjoys roller skating, basketball and tennis and is quite a proficient golf player...so much so that her team recently won first place at a charity-celebrity golf tournament at La Costa, California. On the local scene, Luna recently became a member of the Board of Directors of the Thaliens, an important charity organization at Cedars Sinai Hospital in Los Angeles. Barbara Luna feels that since she has been given so much, it is important for her to give her time and talent and support to charitable causes wherever it is needed.



I've selected a very heavy topic for this issue: Gravity. By reading this article, you should understand how ship's gravity works without getting weighed down by a lot of technical jargon.

Gravity onboard starships is generated when power is fed to the gravity (sometimes called graviton) generators. Each disk-shaped generator is 50 cm* in diameter by 25 cm* high, filled with pressurized gas. When the generator is fed power it spins a rotor up to 125,540 rpm‡. The rotor is made of a superconducting material and the rotation causes it to emit a graviton pulse of a few picoseconds† in length. Each generator is paired with a companion that fires alternately to the first, so that gravity is constantly maintained. A Galaxy Class (or Kelly Class) starship contains some 1200 generators.

In the event of power failure, the generators can operate from backup power for four hours, but only at 80% of normal (Earth) gravity. In addition because the rotor is suspended in the pressurized gas it is sensitive to movement that could alter its balance, each generator casing is designed to absorb low level momentum. Protecting the gravity generators from high levels of momentum is a priority of the ship's Inertial Dampening System.

* 1 Centimeter = 1/100 meter or 0.39 inches (generator measures apx 20 inches diameter by 10 inches high)

‡ RPM = Rotations Per Minute

† 1 picosecond = 1 trillionth of 1 second, or 1/1000000000000, or 10 to the power of -12 (negative 12)

QUARTERMASTER

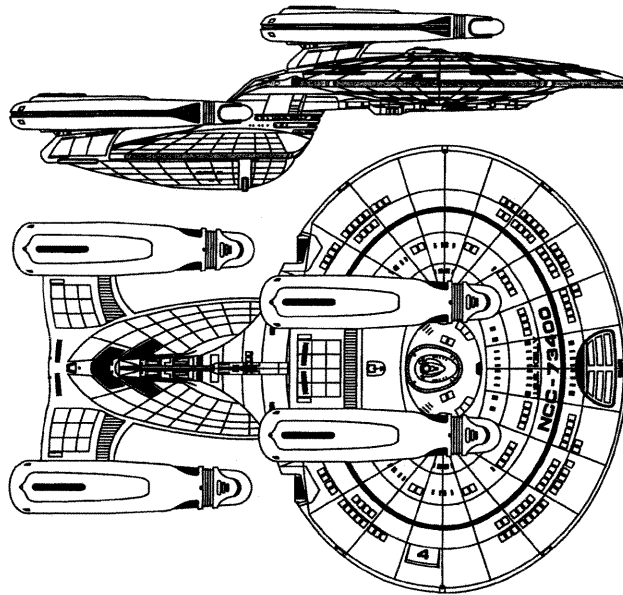
Now Available for our members!

Kelly T-Shirts: We have 2 red and 1 yellow in stock. All are XL. The next batch will be processed once we receive a minimum of 15 pre-paid orders. The cost is \$15.00 per shirt. They are available in Red, Yellow, Blue, or Gray.

Magnetic name badges, Kelly Comm Badges, Business Cards.

See the webpage for more details

www.geocities.com/area51/vault/4742/qmaster.html



AS HOSTILITIES INCREASED WITH THE ROMULANS, THE CARDASSIANS, AND THEN THE BORG, STARFLEET CAME TO THE CONCLUSION IT NEED A STARSHIP WHOSE PRIMARY MISSION OBJECTIVE WOULD BE DEFENSE. ITS INTENDED FIELD OF OPERATION WOULD PLACE THEM IN THE THICKEST OF COMBAT. IT WOULD HAVE TO BE BUILT TO TAKE MORE PUNISHMENT THAN THE AVERAGE STARSHIP. IT WOULD INCORPORATE THE NEWEST AND MOST POWERFUL WEAPONS AVAILABLE TO THE FEDERATION. THIS WAS THE PHILOSOPHY BEHIND THE DESIGN OF THE KELLY CLASS STARSHIPS. THE CLASS SHIP WAS NAMED AFTER A WORLD WAR II BRITISH DESTROYER (A TERRAN WATER-VESSEL). WHILE IN PURSUIT OF A GERMAN U-BOAT, THE HMS KELLY WAS HIT BY A TORPEDO ON THE STARBOARD SIDE, BLASTING A FIFTY-FOOT HOLE WHICH ALSO TORE OPEN THE FORWARD BOILER. "KELLY HAS GONE," SAID AN EYE WITNESS BUT SHE DIDN'T SINK. NINETY-ONE HOURS LATER ACROSS THE NORTH SEA THE KELLY FOUND HER WAY HOME. IT IS EXPECTED THAT THE KELLY CLASS STARSHIPS WILL CARRY ON THIS SAME TRADITION OF STRENGTH AND ENDURANCE. AS CONSTRUCTION CONTINUED, THESE VESSELS BECAME KNOWN TO THE MILITARY DIVISION AS THE "BEAUTIFUL LADIES" AND THEREFORE CHRISTENED AS SUCH.

THE MOST STRIKING FEATURE OF THE KELLY CLASS STARSHIPS IS THE ADDITIONAL WARP NACELLES ON THE SAUCER SECTION. THESE ARE POWERED BY AN INDEPENDENT WARP CORE. ALTHOUGH THIS ONLY MODERATELY INCREASES THE SHIP'S MAXIMUM VELOCITY, THE TRUE BENEFITS FROM THIS DESIGN DEMONSTRATE THEMSELVES IN OTHER USES. IN THE DOCKED CONFIGURATION, THE SECOND CORE DOUBLES THE SHIP'S AVAILABLE POWER FOR USE IN OFFENSIVE OR DEFENSIVE MANEUVERS. IN SEPARATED FLIGHT MODE, THIS ALLOWS BOTH SECTIONS (SAUCER AND STARDRIVE) TO BE FULLY WARP CAPABLE. WHERE THE SAUCER SECTION IS ESSENTIALLY AN ESCAPE POD ON OTHER SHIP CLASSES, THE KELLY CLASS USES THE SAUCER TO INCREASE FIREPOWER AND TACTICAL OPTIONS. ALL FOUR NACELLES INCORPORATE TETRYON FLUX INHIBITORS TO PREVENT SUBSPACE DAMAGE AT HIGHER WARP VELOCITIES.

SINCE KELLY CLASS STARSHIPS ARE DESIGNATED AS SUPER-DREADNOUGHTS, THEY WERE EQUIPPED WITH THE EQUIVALENT FIREPOWER OF FOUR STARSHIPS, INCLUDING 8 PHOTON TORPEDO LAUNCHERS AND 14 PHASER ARRAYS. EACH SECTION HAS FOUR PHOTON TORPEDO BAYS CAPABLE OF LAUNCHING UP TO TEN TORPEDOES AT ONCE. THE STARDRIVE SECTION HAS A THREE FORWARD AND ONE AFT CONFIGURATION, WHILE THE SAUCER SECTION MOUNTS ONE LAUNCHER AT EACH OF THE FOUR CARDINAL POINTS. IMPROVED PHASER EMISSION RATIOS COUPLED WITH ADDITIONAL POWER FROM THE SECONDARY CORE PROVIDE AN UNSTOPPABLE COMBINATION. THE MK-XXXXV-C MODELS ARE EQUIPPED WITH A MEGA PHASER CANON WHICH CAN GENERATE A CONCENTRATED BURST OF ENERGY AT CONTROLLED FREQUENCIES.

THE "C" MODELS ARE ALSO EQUIPPED WITH PHASED CLOAKING TECHNOLOGY. THE ADDITIONAL WARP POWER ALLOWS THEM TO DEDICATE ONE CORE TO THE CLOAKING GENERATORS AND THE OTHER CORE TO POWER THE ENGINES, WEAPONS, AND DEFLECTOR SHIELDS, THEREBY ALLOWING THE VESSEL TO FIRE WHILE CLOAKED. NATURALLY, THIS ABILITY IS LOST IN THE SEPARATED FLIGHT MODE. EACH SECTION HAS ITS OWN CLOAKING GENERATOR BUT IT IS NECESSARY TO DE-CLOAK BEFORE FIRING. THE PHASED CLOAK HAS ALSO BEEN ADAPTED FOR USE IN A LIMITED NUMBER OF PHOTON TORPEDOES. THIS ALLOWS THE TORPEDO TO PASS THROUGH AN ENEMY'S DEFENSES AND DELIVER ITS PAYLOAD INSIDE THE VESSEL.

KELLY CLASS STARSHIPS HAVE 46 DECKS AND A MORE GRAVID LOOK, DUE TO THE DISTENDED BELLY, HOUSING EXTRA ANTIMATTER PODS, SHUTTLECRAFT HANGERBAYS, AND QUARTERS FOR THE MARINE CONTINGENT. THE BLACK ANODIZED DIBURNIUM-OSMIUM PLATING STRENGTHENS THE HULL'S SUPERSTRUCTURE. IT ALSO MAKES IT SCAN RESISTANT AND MORE DIFFICULT TO TARGET DURING COMBAT. FEWER WINDOWS GREATLY IMPROVES HULL INTEGRITY BY LIMITING THE NUMBER OF WEAK POINTS.

KELLY CLASS STARSHIPS HAVE FOUR SHUTTLEBAYS FOR LAUNCHING AND RECOVERING SHUTTLECRAFT. SHUTTLEBAYS 1, 2 AND 3 ARE LOCATED ON THE FANTAIL ALLOWING FOR FASTER AND EASIER LAUNCH AND RECOVERIES. SHUTTLEBAYS 1 AND 2 HAVE A COLLAPSIBLE PARTITION THAT ALLOWS THEM TO COMBINE INTO ONE LARGE SHUTTLEBAY, TO ACCOMMODATE THE RECOVERY OF LARGER CRAFT. SHUTTLEBAY 4, LOCATED ON THE STARBOARD SIDE OF THE SAUCER SECTION, PROVIDES THE SAUCER WITH IT'S OWN LAUNCH, RECOVERY, AND REPAIR FACILITIES.

THESE ARE JUST SOME OF THE FEATURES WHICH MAKE UP THESE POWERFUL STARSHIPS. WITH NEW THREATS, LIKE THOSE OF THE JEM'HADAR, IT WILL TAKE A KELLY CLASS STARSHIP, OR ONE LIKE IT, TO "DEFEND THE FINAL FRONTIER."

The Medical Department will be holding monthly meetings on the 4th Thursday of each month. Here are a few highlights:

FIRST QUARTER HEALTH TOPICS:

JANUARY: PROTEIN "A BIG YES!!!"

- Protein is necessary in order for muscle to grow.
- Protein provides amino acids, the building blocks of life.
- Protein promotes growth, repair and maintenance of cells.
- Protein helps to regulate insulin levels in the body.
- Protein aids the production of hormones, insulin, antibodies, enzymes and body tissues.
- Protein slows the digestion process resulting in a feeling of fullness.

FEBRUARY: ASPARTAME "A BIG NO!!!"

- Diabetics have memory loss, confusion, and severe vision loss.
- Changes the brain chemistry.
- Aspartame destroys the nervous system.
- It is not a diet product.
- It makes you crave carbohydrates and will make you FAT.
- It also can cause birth defects.

MARCH: PHYSICAL EXERCISE

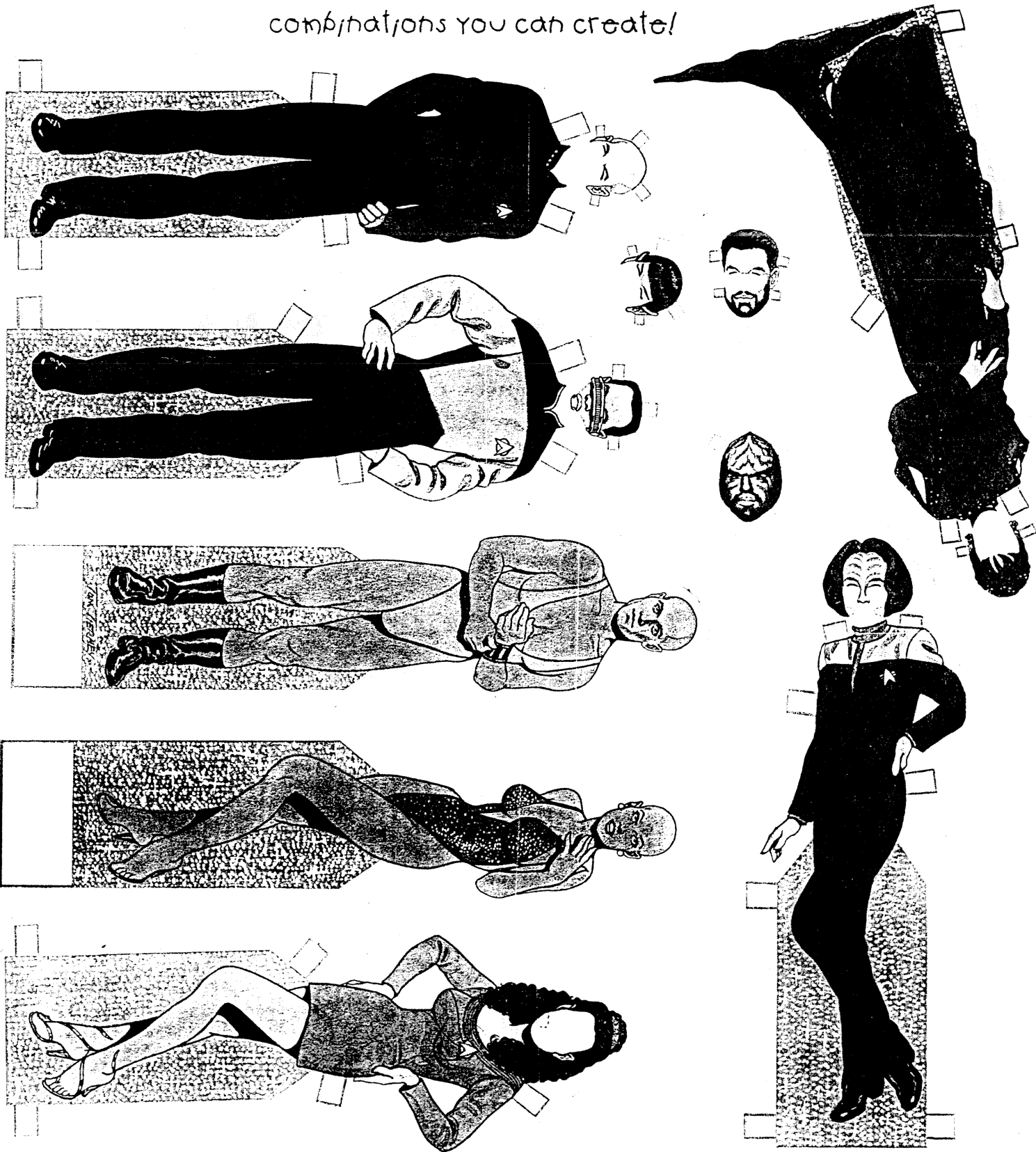
We will meet for some physical exercise activities, so come prepared.

"I WANT YOU TO LIVE LONG AND PROSPER!!!"

FOR MORE INFORMATION ON HEALTH TOPICS OR ACTIVITIES CALL YOUR MEDICAL OFFICER RHONDA HOLLINGER AT 480-7969, 319 W. AMANDA LYNN LN, MIDVALE.

YOUNG AT HEART

Have an adult copy this page, then cut out the dolls, heads, and outfits from the copied page. Mix & Match them to see how many combinations you can create!



CONTACTS

ADMIRAL DENNIS HOLLINGER	CInC 7th Fleet	248-1106	ADMIRALDRH@AOL.COM
CAPTAIN RICHARD HENLINE	CO	973-4924	RICHARD@HENLINE.COM
LT. CMDR JILL BOGLER	XO	265-1233	AGIANI_NOI@YAHOO.COM
LT. CMDR RUTH BURNS	RECORDS	965-6535	TWOSOKS@JUNO.COM
LT. CMDR CAROL MAHONEY	SCIENCE		FABULOUSCPA@JUNO.COM
LT. RHONDA HOLLINGER	CMO		ADMIRALDRH@AOL.COM
LT. GEORGE BOGLER	ENGINEERING	265-1233	chief_engineer73400@yahoo.com
LT. CHRISTY THORSEN	TACTICAL	968-6201	TPREE@XMISSION.COM
LT. DAWN HARVEY	COMMUNICATIONS		350549@email.lidsbc.edu
SHIP'S MAIL(CLUB TO CLUB)			USSKELLY@JUNO.COM
U.S.S. KELLY WEBSITE			WWW.COME.TO/USSKELLY
7TH FLEET MESSAGE BOARD			WWW.BOARDHOST.COM/BOARDS/7TH-FLEET

EDITORS NOTE

This is the first Communique we have tried to put together ourselves. It has been harder than anticipated, but a lot of fun.

As this is the 50th issue of the *Kelly Communique* we wish to congratulate everyone associated with the ship over the past 12 years on building something wonderful.

~

The Kelly IS a beautiful lady and we DO love her.

George & Jill Bogler

DISCLAIMER

The *Kelly Communique* is a non-profit newsletter published as a means of communication between Star Trek fandom. It does not intend to infringe on any rights.

"Star Trek", "Star Trek: The Next Generation",

"Star Trek: Deep Space Nine (DS9)",

"Star Trek: Voyager" are registered trademarks of Paramount Pictures Corp.

All rights are reserved to the original work herein. No copying without permission of the individual author.



ILLUSTRATIONS BY
HARRY TRUMBORF