



# KELLY COMMUNIQUE

ISSUE 66

WINTER 2003



*Don  
Hallett*

# **-LOG ENTRY-**

## **CAPTAIN'S LOG: STARDATE 56101.1**

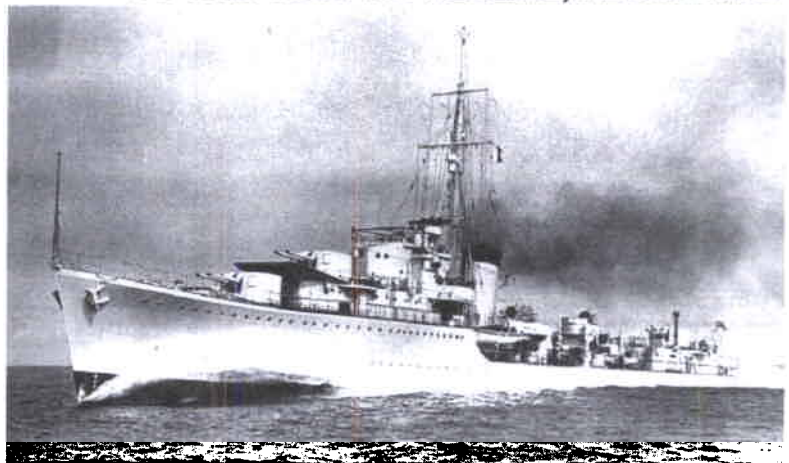
Another new year has come to greet us. This year brings with it a lot of anticipation and not a little anxiety. No one knows what the future holds in store...we can only 'boldly go' out to meet it. Our theme for this year is "*Enter The Kelly Fun Zone*". I hope that every crewmember of the **U.S.S. Kelly** will truly find fun while participating in Kelly Activities throughout the year. This is not to say that every activity will be a party, but that everyone will find fulfillment and enjoyment in serving with us. Whether it be to earn a rank advancement or receive a commendation, meeting a personal goal or just taking time to work on your own interests...**Make it fun!!!**

For myself, I intend to 'bone up' on my trivia knowledge, collect a bunch of new autographed photos and work on my character guide. Sparked by an interest in Pam Carson's series of HMS Kelly articles, I've also been delving into the history of the ship that was our ship's namesake. I have found some very interesting parallels between the two vessels. Other than the names being the same, I have found many similarities. For instance, both ships are the class-ship (the first ship of the class to be built). The HMS Kelly Class ships are all named starting with the letter **K**, while the USS Kelly Class are named after beautiful women or 'ladies.' The HMS Kelly was the leader of The Fifth Flotilla (a battle group) and our ship is the flagship of The Seventh Fleet. They both have a camouflaged exterior hull to make them hard to see in battle...one being painted Mountbatten pink, (to blend into the sunset for battle at the Captain's favored time) and the other is a black anodized diburnium-osmium, (to make her scan resistant and virtually invisible in the darkness of space). The respective Captains of the two ships are related. Lord Louis Mountbatten is my seventh cousin, once removed. I know that this is a fairly distant relationship, but we did share a common ancestor (King Edward II of England). Also, Lord Captain Mountbatten had the nickname of "Dickie", and I'm sure you are all aware of the name I am known by. After the Second World War, Lord Mountbatten was made the Governor of Burma and India and was responsible for creating India as an independent country. Some of the repercussions stemming from that action have caused many of the present day problems in India, including getting medical supplies to remote locations of India and Nepal. The USS Kelly supports the stamp project which works to get those medicines where they belong. The HMS Kelly had two mascots...one a cat named Hawthorne and the other a little dog named George. The First Officer of the USS Kelly is named George, and he lives with a couple of cats. These two vessels have a proud heritage and a reputation of honor. As I study more of the history of the legendary HMS Kelly, I am sure that more astounding similarities will emerge. Any one else who finds things that the two ships have in common are encouraged to let me know so that I can make note of them in our logs.

**-CAPTAIN RICHARD HENLINE, RECORDING-**

**Number One...My name is Lord Louis Mountbatten or Captain. Please tell the crew to refrain from calling me Dickie Wickie!**

**Yes, Sir!**



## **EXECUTIVE STRESS**

By Lt. Cmdr George Bogler, Executive Officer

This issue's *Executive Stress* topic is stress. Recently I have noted several emotional flare-ups among the crew and have even had to try to diffuse a couple. We have discussed stress before in the *Communiqué* but it looks like we need a refresher—remember the old saying that “Those who do not learn from the mistakes of the past are bound to repeat them.” I strongly encourage us all to get it right this time. Stress is unavoidable. There will always be *something* that shows up in our lives to irritate us & mess up our plans. All we can do is learn how to minimize the effect of the stressful occurrence. Here are a few tips:

1. Be flexible. Leave some “fudge room” in your schedule. Expect the unexpected to happen.
2. Leave time for yourself. Don't let this be what you sacrifice every time you deal with crises.
3. Identify your biggest recurring irritant. Study it & find ways to understand it & minimize the stress it causes you. *“Understanding has made friends of many different people.” “Know your enemy and know yourself, and you will never be defeated.”*
4. Don't hold it in. If something bothers you now, act on it now. If you let it fester it will gnaw at you. When it does come out it will be a much bigger outburst than when it first appears.
5. Work off your stress. Use physical activity or quiet time; whatever works for you. Do not allow yourself to take your stress out on others. This leads to other negative feelings and, eventually, even more stress.

By the time you read this, the holiday season will be over. Now is the time to get rid of your holiday stress by taking some time out to “re-set”. Find something fun and/or relaxing to do. Consider that an order!

Did everyone get their Fun Zone passes? Bring them to Kelly activities during 2003 to be validated. At least one prize will be awarded at every activity, beginning with the Fleet Banquet. You MUST be present to win! I look forward to seeing you at the Fleet Banquet.

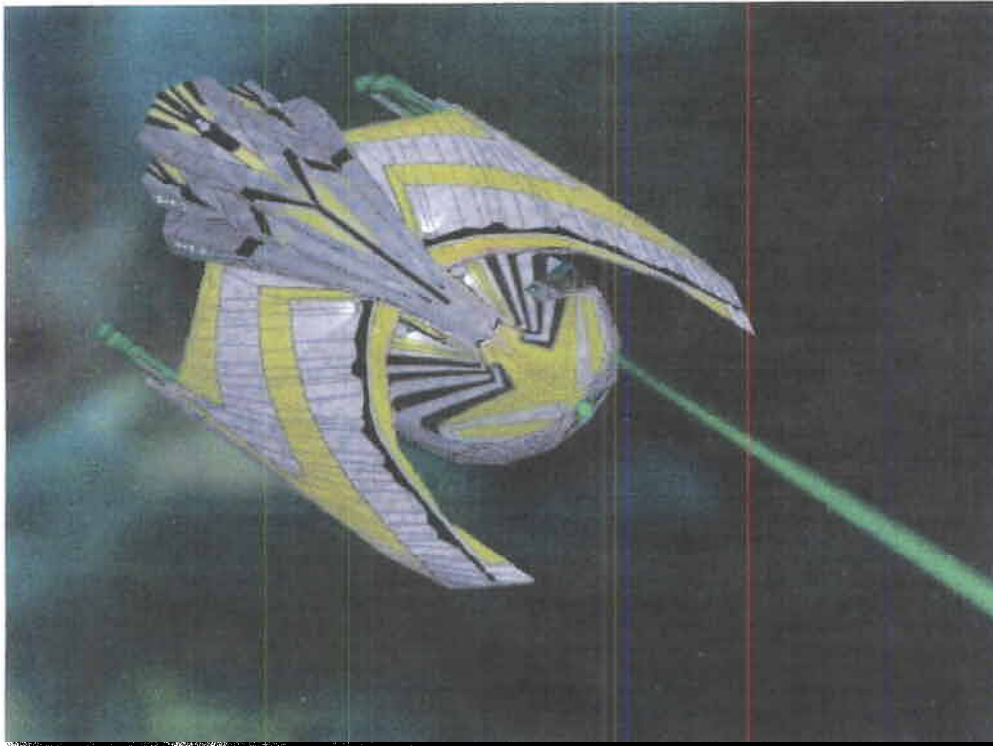
As always, please feel free to contact me about anything.  
Contact Info: 685-6154 (home), 755-4100 (cell), KellyXO@attbi.com

## **Kelly Way Awards**

(Final Report)

David Thalmann	73401 Kelly Way
Ruth Burns	73402 Kelly Way
Brent Nielson	73403 Kelly Way
Stephanie Thalmann	73404 Kelly Way
Don Hallett	73405 Kelly Way

Congratulations to these dedicated crewmembers for publicly living the U.S.S. Kelly Way during 2002 and to everyone who lived it in their own way. May we all continue to do so in the future.



### PREAX CLASS ESCORT (REC)

The Romulan Escort class vessel is the Preax, a new design first encountered last year. They feature bright, bold colors, and are amongst the most beautiful in the galaxy. These ships are small, fast, and powerful, and have become well known and feared throughout the galaxy. Equipped with a cloaking device and light plasma torpedo, they often sneak up on their unsuspecting targets and unleash a furious, often unprovoked attack. Preax vessels have brought much larger vessels to their knees, so they are not to be underestimated. These ships are cheap and easy to manufacture; therefore, they are fairly common.

#### SPECS:

Length: 92 meters  
 Mass: 40,000 metric tonnes  
 Crew: 24  
 Marines: 4  
 Maximum Impulse: 3,360 kilometers per second  
 Hull Rating: 0.8  
 Shield Rating: 15.0  
 Maneuverability Rating: .48/.46

#### WEAPONS:

Forward: 2 disruptors  
 Aft: none  
 Special Weapons: Cohesive Fused Deuterium Irradiation Cannon

**Strengths:** The Preax-class Escort is incredibly fast and highly maneuverable, making it a great hit-and-run craft.

**Weaknesses:** The fact that it has a Cohesive Fused Deuterium Irradiation Cannon (CFDIC), in place of a Photon Torpedo, also means that this ship has less power available for structural repairs. Be forewarned that the radiation released from the Preax's CFDIC can severely damage its own crew. The Preax's CFDIC, while damaging to the crew, is essentially useless against shielding because it will dissipate into the energy field itself. Against a craft with superior shielding, the CFDIC may have difficulty breaking through.

**Tactical Summary:** These vessels are vulnerable to ramming, tractors and full volleys of primary weapons.

# MY ENCOUNTERS WITH *ENTERPRISE*

By Lieutenant Michael McCreight

I grew up watching the television series *Star Trek* and I never thought that some day I'd be associated with a vessel named *Enterprise*. That vessel was an Aircraft Carrier named the *Enterprise*, CVN-65 (the CVN stands for Carrier Vessel Nuclear). *Enterprise* happens to be the world's first nuclear Aircraft Carrier. To this date she is still on active duty. My association with the U.S.S. *Enterprise* started when I entered the U.S. Navy in 1984. After Basic Training and "A" School, my first duty station was a sea-going aircraft squadron known as Attack Squadron 94 or VA-94. That particular squadron was assigned to U.S.S. *Enterprise* as part of her air wing.

While assigned to VA-94, I was able to do two cruises. The first was a Western Pacific cruise with various ports-of-call, including Hawaii, the Phillipines, Singapore and Pakistan, just to name a few. The second cruise started out as another Western Pacific cruise, but about three months into that cruise the Libyans wanted to start some trouble with the United States. So the *Enterprise* along with her air wing and battle group entered the Mediterranean Sea via the Suez Canal. There they joined with other battle groups and air wings already there. Some of the ports we visited while in the Mediterranean were: Rome, Italy; Nice, on the French Riviera; Toulon, France; and Gibraltar, on the coast of Spain. We spent about two months on the Mediterranean before orders came to rejoin the *Sixth Fleet*, back in the Pacific. Along the way I was able to visit places that I thought I could only dream about. One of them was a Port Call in Perth, Australia. After leaving Australia, we went back to Hawaii and then on up to the Naval Base at Alameda, California. Paramount Pictures wanted to use the *Enterprise* in the movie *STV: The Voyage Home*, but we were out on deployment at the time. So they used the U.S.S. *Ranger* instead and simply called it the *Enterprise*.

In 1987 I was assigned my second duty station at the Naval Air Station in Barber's Point, Hawaii. Here, I was able to see U.S.S. *Enterprise* as she came in to port. Below is a picture of one of her decals that I acquired while onboard *Enterprise*.



April 29, 1940, the *Kelly* entered Scapa and Captain Mountbatten went to a conference. He was given a mixed flotilla of 4 British destroyers and one French. He wondered how many of them would make it back from the North Sea after two nights of dive bombers. Then came the thick fog. This gave Mountbatten an idea. Maybe they could hide from the German bombers. He took the flotilla and made a dash for Namsos, Norway. It was 70 miles of fog and treacherous coastline. They were bombed all the way but took no direct hits. They didn't know it at the time but their masts stuck out of the fog. They also did not know that Namsos was free of fog.

When they arrived in Namsos they were attacked and could not evacuate the British soldiers as planned. They turned back into the fog, into the fjord and then to the sea.

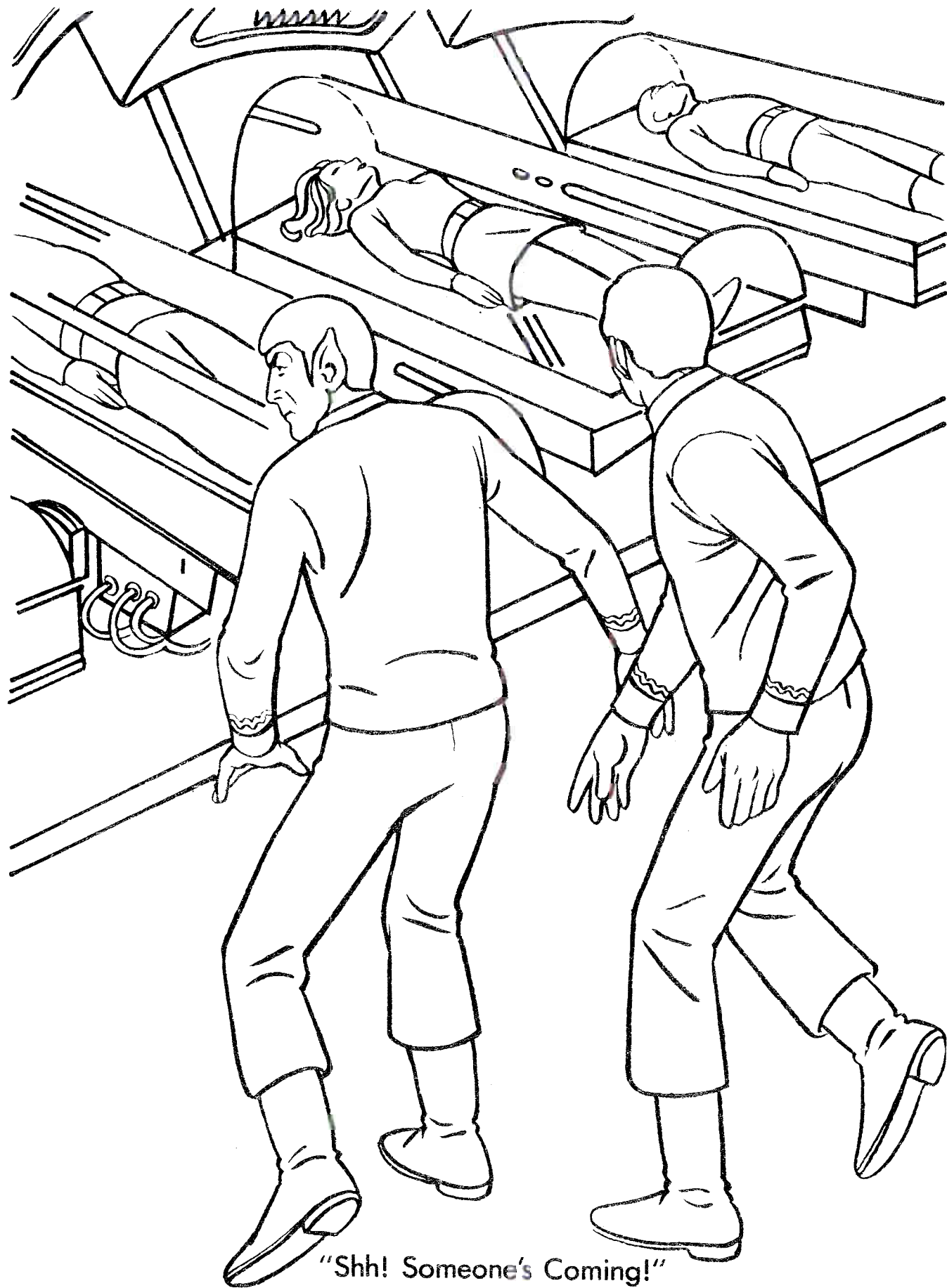
April 30 was the last day to try the evacuation. The German forces had almost caught up with the British rearguard holding out on the hills behind Namsos. The *Kelly* led the way at 26 knots. By twilight they approached Namsos and could see the results of the blitzkrieg from the air. No one on the *Kelly* knew if the town was in the hands of the British or the Germans. Nearly everything was burning in the town. Against this backdrop 6,000 soldiers were lined up waiting to be rescued. The operations began at about 10 p.m. that night and by 2:20 a.m. they were all rescued and made as comfortable as possible. The French troops had heavy packs because they refused to leave behind the French cheeses for the Germans. At 4:30 a.m. they were sighted by the Germans and soon the Luftwaffe appeared and attacked until late afternoon. Several of the ships were hit and sunk but the *Kelly* safely delivered the soldiers to Britain.

Next the *Kelly* refueled and went to the east coast to locate a German force located near the island of Sylt. They steamed around Scotland and found a member of their own flotilla, the *Kandahar*. Rapidly running out of fuel they planned to turn around at 11 p.m. Just after 11 someone spotted a torpedo and after a pause the Captain said, "Thank God that was a dud." Then the explosion came. The torpedo smashed into the *Kelly's* plates by the boiler room and flames roared up in the night. Some hear the blast and some felt the great shock. The ship listed to starboard, all power gone. The boiler had been going at 20,000 horsepower when it blew up, burning nearly all the crew. The Commander looked to see how to stop the flooding from the boiler and the sea. The Captain shouted, "Don't jump over the side until I give the order. This ship is not sinking, so don't panic."

The men inside were blocked from exiting. A young telegraphist [communications] named O'Neill, volunteered to be pushed through the crack to help the other sailors. He was given a shot of morphine and pushed through the crack, then the crack closed. Bob Knight had been sitting in sick bay and was severely burned. Captain Mountbatten took off his great coat and wrapped it around Knight's shivering body.

The other ships left the area as soon as the attack began and the *Kandahar* saw the torpedo strike the *Kelly* and decided in all the smoke and steam that the *Kelly* had sunk. The 21 year old Marquess of Milford Haven thought his uncle's ship had gone down. The crew of the *Bulldog* radioed for assistance and managed to get a tow line aboard the *Kelly* and began to pull her towards home. The men on the *Kelly* formed a human chain from the bridge to the hatch to repeat all orders from the officer of the watch to the sailors down at the tiller who were steering the ship by hand. Just after midnight an E-boat appeared and hit the *Bulldog* a glancing blow and bounced off the *Kelly* at 40 knots. Parts of the boat landed on the *Kelly's* decks and the crew heard the Germans screaming until they sank. At dawn the *Kelly* had increased her list.

She was a ship on the point of sinking, a ship that should have already sunk by all standards, by all standards save the *Kelly's*.



"Shh! Someone's Coming!"

# Word Search - TOS Novels

- Abode of Life
- Ashes of Eden
- Avenger
- Battlestations
- Best Destiny
- Better Man
- Captain's Daughter
- Corona
- Cry of the Onlies
- Doctor's Orders
- Double, Double
- Dreadnought
- Dwellers in the Crucible
- Enterprise
- Fearful Summons
- Federation
- Final Frontier
- Final Reflection
- Flag Full of Stars
- From the Depths
- Ghost Walker
- Great Starship Race
- Home is the Hunter
- IDIC Epidemic
- Ishmael
- Kobayashi Maru
- Lost Years
- Memory Prime
- Mutiny on the Enterprise
- Pandora Principle
- Patrian Transgression
- Pawns and Symbols
- Prime Directive
- Probe
- Recovery
- Sanctuary
- Sarek
- Shadows on the Sun
- Spock's World
- Strangers form the Sky
- The Return
- The Rift
- Three Minute Universe
- Time for Yesterday
- Uhura's Song

M	U	T	I	N	Y	O	N	T	H	E	E	N	T	E	R	P	R	I	S	E	T	D
P	R	E	T	N	U	H	E	H	T	S	I	E	M	O	H	S	I	N	N	E	D	W
R	A	A	T	C	A	P	T	A	I	N	S	D	A	U	G	H	T	E	R	D	O	E
O	M	B	S	E	M	A	J	P	M	L	A	X	A	V	E	N	G	E	R	U	U	L
B	I	O	X	E	R	T	R	A	E	H	S	N	A	C	L	U	V	E	N	K	B	L
E	H	D	T	H	E	G	R	O	F	S	N	A	C	L	U	V	A	D	F	B	L	E
B	S	E	I	S	R	E	D	R	O	S	R	O	T	C	O	D	E	E	E	A	E	R
E	A	O	S	C	D	T	F	I	R	E	H	T	L	B	N	D	S	S	D	T	D	S
S	Y	F	H	S	E	I	O	R	Y	S	O	L	U	O	S	P	T	I	E	T	O	I
T	A	L	M	S	R	P	C	E	E	C	I	R	U	K	O	E	W	R	R	L	U	N
D	B	I	A	R	H	Y	I	K	S	J	N	G	Y	C	R	C	E	P	A	E	B	T
E	O	F	E	A	O	T	E	D	T	S	H	N	K	M	R	E	C	R	T	S	L	H
S	K	E	L	E	N	J	U	V	E	T	A	N	A	A	L	H	E	E	I	T	E	E
T	F	N	L	Y	D	N	G	R	R	M	E	N	I	G	R	G	N	T	O	A	L	C
I	E	T	A	T	A	E	E	Q	D	A	I	G	A	I	N	O	T	N	N	T	P	R
N	A	R	W	S	I	D	O	N	A	S	H	C	S	I	I	H	A	E	S	I	I	U
Y	R	E	V	O	C	E	R	I	Y	M	S	T	L	T	A	K	S	K	E	O	C	C
K	F	D	K	L	O	F	G	T	S	U	I	L	C	L	I	R	I	S	N	N	N	I
S	U	Y	A	E	R	O	E	S	S	E	O	E	M	E	E	R	G	R	O	S	I	B
E	L	R	H	W	O	S	G	I	O	H	L	A	L	V	K	R	H	A	B	R	R	L
H	S	O	O	D	N	E	U	R	N	F	N	A	I	N	E	E	O	T	D	E	P	E
T	U	L	M	I	A	H	R	K	E	N	O	N	U	A	N	N	S	S	L	I	A	V
M	M	G	N	O	S	S	A	R	U	H	U	S	T	L	E	H	T	F	R	T	R	I
O	M	S	L	M	A	A	L	B	Y	E	E	S	I	T	V	S	W	O	O	N	O	T
R	O	N	L	Y	P	A	O	R	T	H	T	N	S	O	U	Y	A	L	W	O	D	C
F	N	A	A	L	N	G	A	U	T	A	E	R	K	E	L	E	L	L	S	R	N	E
S	S	C	E	I	L	U	N	N	R	S	O	E	R	L	U	N	K	U	K	F	A	R
R	K	L	F	E	T	I	O	S	S	H	H	A	I	L	S	E	E	F	C	L	P	I
E	E	U	R	C	M	S	H	E	T	C	S	B	L	U	V	G	R	G	O	A	S	D
G	R	V	N	E	W	I	M	E	M	O	R	Y	P	R	I	M	E	A	P	N	I	E
N	A	A	E	O	P	A	W	N	S	A	N	D	S	Y	M	B	O	L	S	I	X	M
A	S	R	D	R	Q	S	H	T	P	E	D	E	H	T	M	O	R	F	A	F	E	I
R	H	A	A	S	H	A	D	O	W	S	O	N	T	H	E	S	U	N	E	D	N	R
T	H	C	N	O	I	S	S	E	R	G	S	N	A	R	T	N	A	I	R	T	A	P
S	E	I	L	N	O	E	H	T	F	O	Y	R	C	N	R	U	T	E	R	E	H	T

- Vulcan's Forge
- Vulcan's Glory
- Vulcan's Heart
- Wounded Sky
- Yesterday's Son

by Lt. Commander Akiela Xal  
(aka) Stephanie Thalmann



# Star Trek: Nemesis

We recently helped promote the premiere showing of *Star Trek Nemesis* at the Jordan Landing movie theater. Thanks to everyone who helped out with this promotion...it was a great success for us. We met some old friends and a lot of new friends who hopefully will want to become a part of our club. The movie itself was wonderful, with everyone having their own favorite parts. Below is some trivia that you might not know about the movie. Enjoy!

- 'Wheaton Wil' (Wesley Crusher) was invited back to the cast by executive producer Rick Berman after Wheaton spoke with 'Burton, Levar' (Lt. Commander Geordi La Forge) on a special *Star Trek* edition of NBC's "Weakest Link" (2001/II). Wheaton remains in the end titles although all of his scenes were cut from the final version of the film and he can only be seen as a non-speaking extra during the wedding scene.
- Jude Law was originally considered for the role of Shinzon
- Actor Michael Shanks read for the role of Shinzon.
- Denise Crosby discussed with executive producer Rick Berman the possibility of using her *Star Trek: The Next Generation* character Sela in the film, but they could not work out a way to properly fit the character into the movie.
- Every previous *Star Trek* series gets some sort of mention or reference. There's a maneuver named for Captain Kirk from "Star Trek" (1966). There is mention of the Dominion War from "Star Trek: Deep Space Nine" (1993). Captain Janeway from "Star Trek: Voyager" (1995) has a cameo. And one of the ships that the Enterprise was to rendezvous with is the USS Archer, named for the captain in "Star Trek: Enterprise" (2001).
- The wine that the crew drinks at the end of the movie is from Chateau Picard. This is a reference to the Picard vineyard seen in the *Star Trek: The Next Generation* Episode "Family".
- Cameo: [Bryan Singer] guest appearance by the man who directed Patrick Stewart in X-Men (2000) and X-Men 2 (2003).
- The four year interval between this film and "*Star Trek: Insurrection*" is the longest between *Star Trek* films.
- Midway during shooting, the captain's chair from the bridge set disappeared, apparently stolen. While the film crew scrambled to find a way to work around the problem, the "Enterprise" (2001) cast and crew shooting in the soundstages next door decided to have a little fun at their franchise-mate's expense: Scott Bakula visited Patrick Stewart's trailer to present him with a makeshift wooden "replacement" chair with the letters K-A-P-T-I-N painted on it.
- Jeri Ryan (Seven of Nine) had a cameo in the earliest draft of the movie's script. It was scrapped when Ryan got a part on "Boston Public" (2000). The cameo was given to Kate Mulgrew (Captain Janeway).
- Was originally slated to be a direct sequel to *Star Trek: Insurrection*.
- Data's cat Spot makes an appearance in *Nemesis*. The last time Spot was seen was in Star Trek: Generations (1994).
- Instead of choreographing actors throwing themselves across the sets to simulate impacts, sets like the Enterprise-E bridge were built on gimbals to provide the shudder.
- Riker comments that he first saw Data on the Holodeck trying to whistle a tune, but cannot remember which tune. This refers to the *Star Trek: The Next Generation* episode, "Encounter at Farpoint", and the tune was "Pop Goes the Weasel".
- The flowers behind Picard at the wedding party are stargazer lilies.

- The Reman race is reportedly inspired by Count Orlok from the film Nosferatu, eine Symphonie des Grauens (1922).
- Shinzon is an actual Chinese name, chosen by writer John Logan as it continues the trend of Chinese names for Romulan characters (as well as the new Reman characters). Logan admitted that he has absolutely no idea what the name actually means.
- The Remans, who debut in this film, are a side species of the Romulans. According to Roman legend, the founders of the city of Rome were two brothers names Romulus and Remus.
- In an early draft of the script Ashley Judd, was supposed to briefly reprise Robin Leffler, her recurring role from the TV-series "Star Trek: The Next Generation" (1987).
- Shinzon means "heart" in Chinese (Manderin).

## Holodeck Adventure: Voyager Part 2

By Lieutenant Jenny Hansen

"I am Lieutenant Jenny Hansen," I told Neelix. When he came into sickbay, I noticed he wasn't wearing a Starfleet Uniform. So I asked, "Why aren't you wearing a uniform?"

Neelix came closer to the bed. "I am not with Starfleet."

I was puzzled. I just couldn't figure out what he meant by that. Just as I was about to say something, my head started to hurt really, really bad. So I put my hands on my head and closed my eyes. Neelix freaked out and walked over to where the Doctor was sitting in his office.

"There is something wrong with her," Neelix said to him. "She just grabbed her head and closed her eyes. Hurry, Doctor. Hurry!"

The Doctor came over to the bed. My hands were at my sides. I could hear them talking, but I couldn't move anything.

"Lieutenant Hansen, can you hear me," the Doctor asked. "Wake up!"

He opened my eyes one at a time to look at my pupils to see if there were any changes. The left pupil was fixed and dilated, but the right eye was fine.

"Doctor," Neelix said, "will she be alright?"

The Doctor picked up his medical tricorder, pulling the scanner portion from the top, and scanned my head.

"She has a blood clot on the left side of her dermal layer, and a lot of blood surrounding her brain. In other words, Mr. Neelix, she has a bad concussion." He thought for a moment. "I need to operate now or she will die. Please leave. I'll inform you when you may return."

As Neelix turned around and walked out of Sickbay, the Doctor called to the bridge, "Kes and Lieutenant Paris please report to sickbay."

"What's wrong, Doctor" asked Janeway.

"I need to perform surgery on our guest, and require their help."

"On my way," said Kes.

"Understood," Paris said as he entered the bridge turbolift.

In a few minutes, they had both reached their destination, and looked to the Doctor for orders.

"I found a blood clot on the left side of her brain," the Doctor informed them, "and if we don't remove it quickly, she will die."

Look for part 3 in the next issue of the Kelly Communiqué!

# Army Shoots Down Artillery Shell with Laser

Tue Nov 5, 4:44 PM ET

By Charles Aldinger

WASHINGTON (Reuters) - The U.S. Army used a high-energy laser to shoot down an artillery shell in mid-flight on Tuesday in a defense industry breakthrough, the Army and the manufacturer said.



Reuters Photo

The Army and TRW Inc, which developed the weapon, said in a joint statement that the laser tracked, locked onto and fired a burst of concentrated light energy photons at the speeding shell over the White Sands test range in New Mexico.

"Seconds later, at a point well short of its intended destination, the projectile was destroyed," the Army's Space and Missile Defense Command said.

The Mobile Tactical High Energy Laser (MTHEL) is being developed by TRW for the Army and the Israeli Defense Ministry. Lasers have been used in past tests at the range to shoot down slower Katyusha Rockets similar to those fired at Israel by militant guerrilla groups in neighboring Lebanon.

"This shutdown shifts the paradigm for defensive capabilities. We've shown that even an artillery projectile hurtling through the air at supersonic speed is no match for a laser," said Army Lt. Gen. Joseph Cosumano, head of the missile defense command.

"Tactical high energy lasers have the capacity to change the face of the battlefield," he added.

The laser was fired from a static testbed in a carefully controlled test, but TRW officials said they looked forward to producing a truly mobile version as the program progressed.

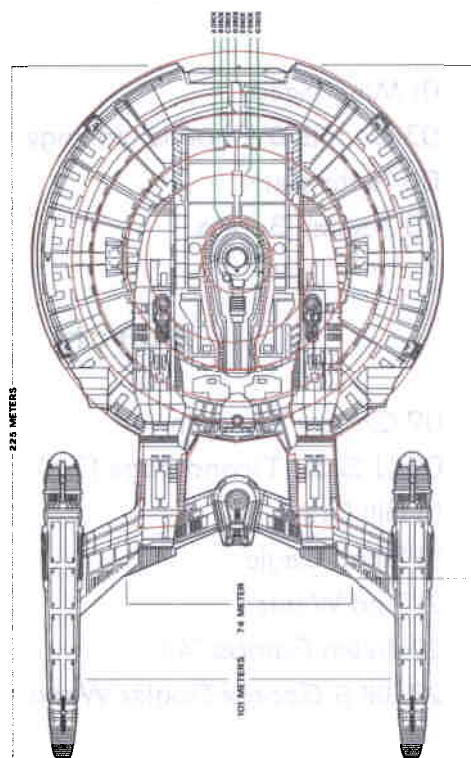
Tuesday's test -- the first time a laser had shot down an artillery shell -- was part of a new series to determine MTHEL requirements and demonstrate the system's capabilities against a wide range of airborne targets.

In earlier tests in 2000 and 2001 the testbed focused on the threat of artillery rockets and shot down 25 Katyushas fired singly and in salvos.

The U.S. military has shot down dummy intercontinental missile warheads in tests both inside and outside the atmosphere using projectile weapons and is also examining the possible use of long-range lasers to burn up such warheads in flight.

## Do You Know Your Trivia?

Enterprise NX-01



How many more NX-class ships are on the drawing board?

Three



# Birthdays



## January

04 Kimber Brasher  
08 Krystal Smith  
22 Nada Linnarz

## February

01 Mike Read  
03 Dennis & Rhonda Hollinger Anniversary  
08 Kathy Park  
20 Ashley Burton

## March

09 Christy Thorsen  
09 U.S.S. Ticonderoga (7th)  
18 Bill Craig  
18 Scott Cagle  
21 Ted Wentz  
22 Julian Ramos (4)  
29 Jill & George Bogler Wedding Anniversary

The Kelly Communique is a non-profit newsletter published as a means of communication between Star Trek fandom. It does not intend to infringe upon any rights.

"Star Trek", "Star Trek: The Next Generation", "Star Trek: Deep Space Nine", "Star Trek: Voyager", "and "Enterprise" are registered trademarks of Paramount Pictures Corp.

All rights are reserved to the original work herein. Copying without permission of the individual author or artist is not permitted.

**The Kelly Communique welcomes articles, stories, and art from all crewmembers. Submissions for the Spring 2003 Edition are due: February 15 to a member of the Command Staff**

We reserve the right to edit all submissions to fit our space

## IMPORTANT DATES:

01 Jan New Years Day  
06 Jan Aron Eisenberg's Birthday  
07 Jan Mark Allen Shepherd's Birthday  
10 Jan SOM  
12 Jan Kirstie Alley's Birthday  
20 Jan DeForest Kelley's Birth Anniversary (83)  
20 Jan Human Rights Day  
27 Jan James Cromwell's Birthday  
02 Feb Brent Spiner's Birthday  
02 Feb Groundhog Day  
08 Feb Ethan Phillips' Birthday  
12 Feb Abraham Lincoln's Birthday  
14 Feb Andrew Robinson's Birthday  
14 Feb SOM  
14 Feb Valentine's Day  
16 Feb LeVar Burton's Birthday  
17 Feb Michelle Forbes' Birthday  
22 Feb Jeri Ryan's Birthday  
23 Feb Majel Barrett's Birthday  
26 Mar Chase Masterson's Birthday  
03 Mar James Doohan's Birthday (83)  
04 Mar Jedi Jo Rouviere (I-Sci-Fi)  
05 Mar Jolene Blalock  
14 Mar SOM  
18 Mar J.D. Herzler  
19 Mar Connor Trineer  
20 Mar John DeLancie  
21 Mar First Day Of Spring  
22 Mar William Shatner  
26 Mar Leonard Nimoy  
29 Mar Marina Sirtis